

Retouradres: Postbus 79092, 1070 NC Amsterdam

Contactpersoon: Caroline de Vries

Kenmerk: xxx

Datum: Friday 26 May 2023

Subject:

### Building works Parnassusweg

Naam

Adres

Postcode + woonplaats

Dear resident, business owner or other interested party,

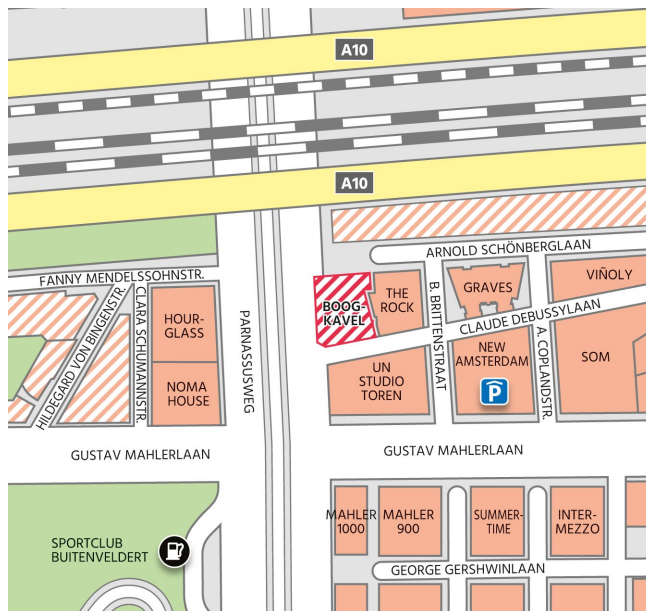
Up to the end of September, building works will be carried out on Parnassusweg, between Claude Debussylaan and Arnold Schönberglaan. This may lead to noise pollution and traffic disruptions. This letter contains detailed information about these activities.

### What we are going to do

Located on the corner of Parnassusweg and Claude Debussylaan, 'de Booglanden' is the last vacant plot in this area. It is the red shaded area on the map to the right. Until recently it was home to a number of padel courts, but in a few years time, the Cube House office building will arise here. In preparation for the construction activities, we will relocate the pavement, the cycle path and the traffic lane of Parnassusweg. We will also remove cables and pipes, as well as the old tram tracks.

### How our work will impact you

Preparations will start in May. We normally work between 7:00 am and 7:00 pm Mondays to Fridays, but in this case, we will also be working – day and night – during two weekends.





#### *Pentecost weekend 25-30 May*

Traffic will be redirected from Thursday 25 May 7:00 pm to Tuesday 30 May 5:00 am. We expect that the removal of the old tram tracks in particular will generate a lot of loud and piercing noise. The work is planned for Friday 26 May and possibly Saturday 27 May, between 7:00 am and 7:00 pm.

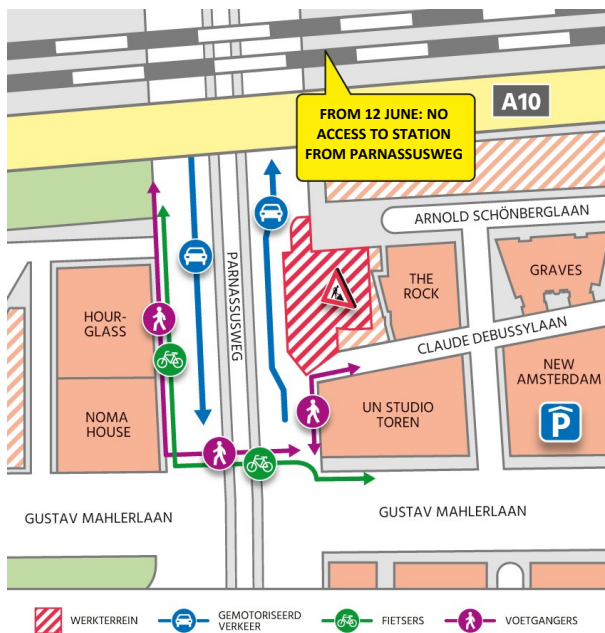
#### *Weekend 3-5 June*

From Saturday 3 June 1:00 am to Monday 5 June 5:00 am, traffic will be redirected again. During this weekend, the road will be resurfaced and road markings will be re-applied.

#### *Diversions in the direction of the city centre, during the two weekends*

During these two weekends, Parnassusweg will be closed for motorised vehicles going in the direction

of the city centre, between Gustav Mahlerlaan and Strawinskylaan. Cars and buses will be diverted via De Boelelaan, Beethovenstraat and Strawinskylaan, and then back onto Parnassusweg. Trams will not need to be diverted, and the tram stop on Parnassusweg will remain accessible. And it will also remain possible to access the train platforms from Parnassusweg. Traffic controllers will direct cyclists and pedestrians to the opposite, western side of Parnassusweg from 25 May 7:00 pm.



#### *Traffic situation in between and after the two weekends*

On the days between and after the weekends, car traffic can use Parnassusweg in both directions. In July, August and September, Zuidasdok will be working on Parnassusweg. This will also cause inconvenience, but then for a more prolonged period of time. Accessing the station from Parnassusweg will not be possible between 12 June and 3 September. From 24 July to 1 October, cars and buses going south (out of the city) will be diverted via Strawinskylaan, Beethovenstraat and De Boelelaan back onto Parnassusweg. Cyclists and pedestrians will still be able to use Parnassusweg in both directions, on the western side of the street.



Would you like to know if the building works on Parnassusweg affect your travel plans? Then you can consult [www.askandgo.nl](http://www.askandgo.nl) (scan the QR-code for more information) or you can ask your question about navigating the building works via WhatsApp (085-0659091).

#### **More information and questions**

More building works will be carried out after the summer. We will inform you by letter before they start. We hope this letter contains all the information you need. It is possible that the work takes more or less time than originally expected, leading to changes in our planning. We will keep you up to date on any changes the best we can, via the website [www.zuidas.nl](http://www.zuidas.nl).

Would you like to know more about the projects in your area or within Zuidas, or about Zuidasdok? Then go to [www.zuidas.nl/contact](http://www.zuidas.nl/contact) or call the information centre on 0800-5065.

Kind regards,  
Zuidas

Michiel Thunnissen  
Project Manager Boogkavel